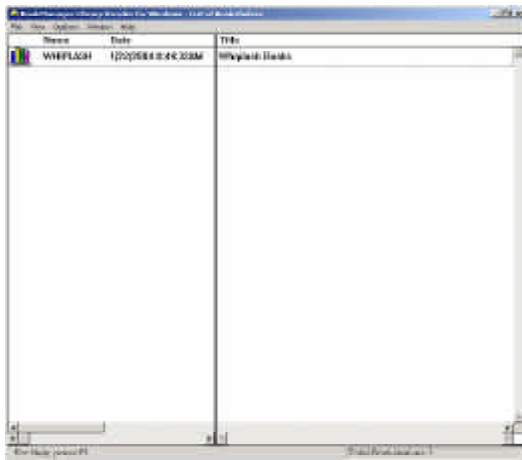
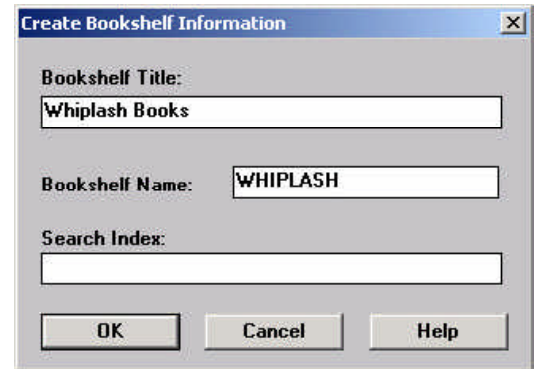


Name the bookshelf you are creating, e.g., “Whiplash.bks,” and click OK.

Type in a title for your bookshelf, e.g., “Whiplash books.” The next time you launch *Whiplash in Hypertext 3.0*, you will see this bookshelf in the List of Bookshelves window.

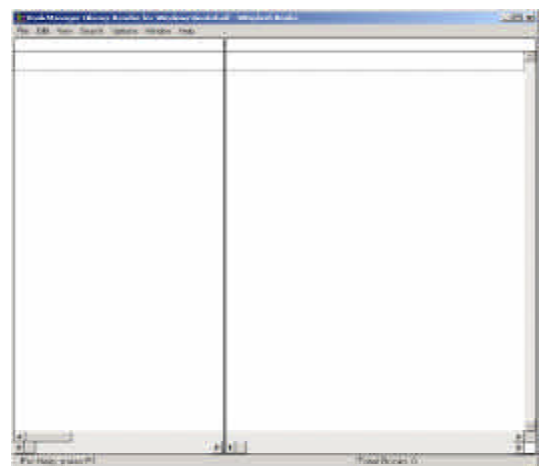
In the next steps, you will assign the book(s) to your bookshelf so *Library Reader* will know where to look for them.

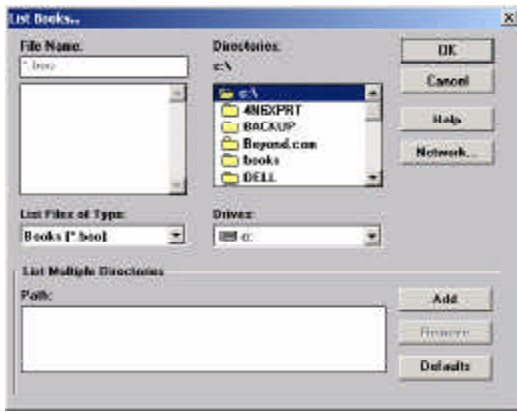


Exit from the program and then relaunch it. Now you will see your bookshelf listed.

Double clicking on the bookshelf icon will open a window with the title of the bookshelf at the top. It will appear empty.

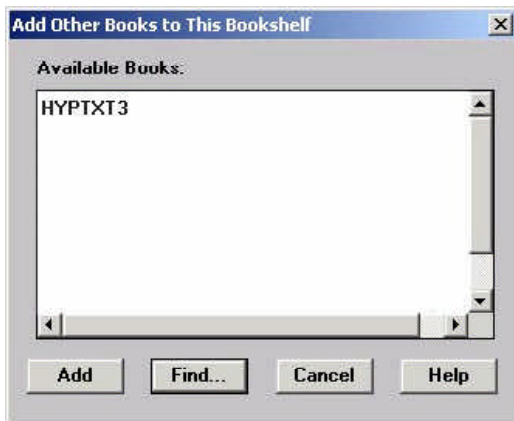
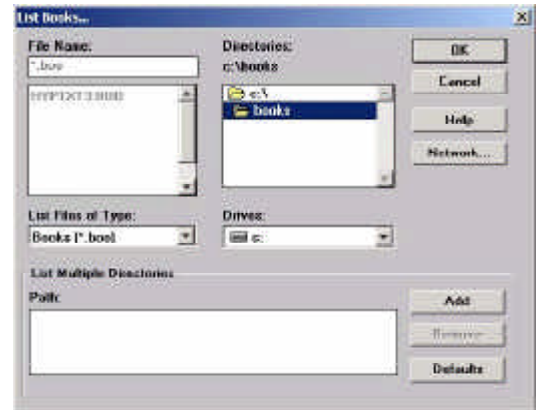
Click File and then click on Add other books to this bookshelf. Again, this screen may initially be blank. You still need to tell Library Reader where your files are. Click the Find button.





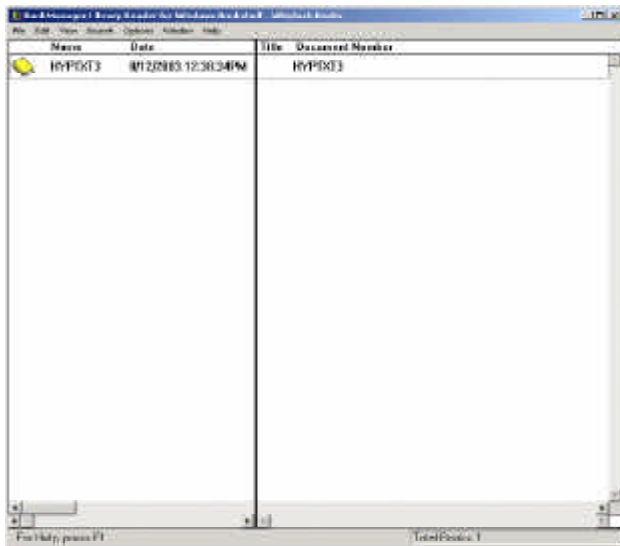
Now you will see a window like this one titled List Books.

In the Directories box, navigate to the place where your *.book files were found in the previous steps. Note: there are probably two locations for these files and this will have to be done in two steps. Find the HYPTXT3.boo file first. Click the OK button.



This will return you to the previous window, and now you should see the file listed in the window. Click on the file and then click on the Add button. This adds it to your bookshelf.

Note: when you install the *Advanced Proceedings Plug-Ins*, you will follow this same procedure to add them to your bookshelf.



Now, when you launch *Whiplash in Hypertext 3.0*, you will see the bookshelf icon. Double clicking on it will open it and display all of the books in that bookshelf.

In this illustration, we see only the main Hypertext book.

You can then either open any book separately and search in that one book, or you can search all of the books simultaneously by clicking Search and then All books listed. The extended search parameters, however, are only available within open books.